

A woman with curly hair, wearing a dark top, is standing in a server room. She is holding a tablet and looking at it. The server racks are filled with equipment, including units labeled 'GRIDSTORE' and 'NUTANIX'. The room is dimly lit with blue ambient lighting.

# WDE

WEB DEVELOPMENT EXPRESS



## Company Profile

TECHNOLOGY IS AT THE HEART  
OF WHAT WE DO.

WE ARE EXPERT CODERS,  
SOLUTIONS ARCHITECTS,  
BUSINESS ANALYSTS AND  
CHANGE MANAGERS



# ABOUT WEBDEVX

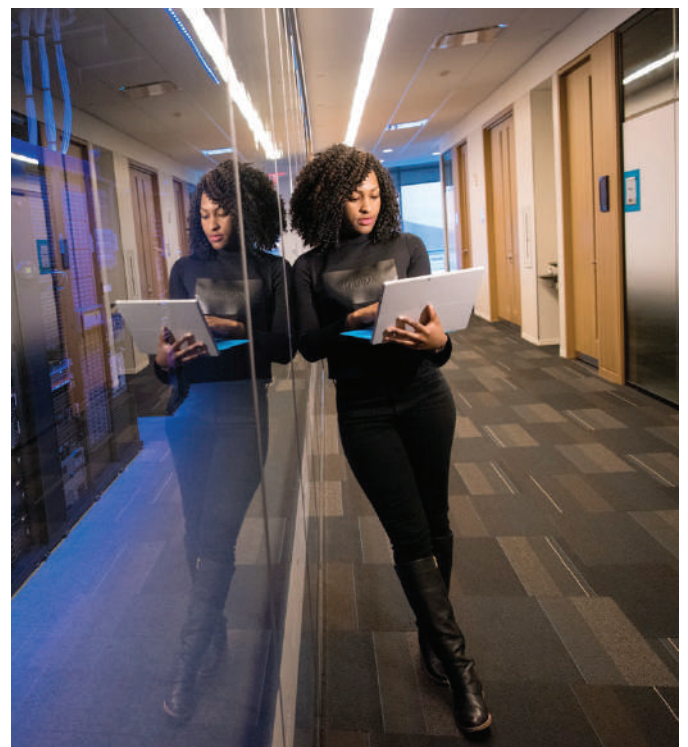
---

Established in 2016, WebDevX operates from offices in Gauteng, South Africa's experts in Digital Transformation and Management Consulting Solutions, WebDevX is a future-enabled partner for the new business generation. As technology takes us into the age of the Cloud, AI, Digital Footprints and Process Automation, WebDevX empowers organisations to function, thrive and develop.

If you've asked the question technology, alongside expertise and innovation, probably has the answer. As experts and innovators, WebDevX is at the forefront of this technology. Whether born and developed inhouse, mastered, customised or integrated – our technology, expertise, and hunger for innovation and problem solving, make WebDevX the partner to take you into the future.

Simply, our objective is to transform organisations into the best versions of themselves.

Business Transformation without Digital Transformation is no longer feasible as a long-term solution. With an eye towards ROI and optimising processes and customer satisfaction, we focus on building new products/ services and implementing prudent strategies in today's dynamic digital environment.





## OUR SERVICES

Technology is at the heart of what we do. As expert Coders, Solutions Architects, Business Analysts and Change Managers, WebDevX empowers organisations towards efficiency, productivity, growth and ROI. Our service offering can be broken up into Consulting Services and Development Services – offered as an integrated whole or as individual solutions

## Digital Transformation & Management Consulting

### **Empowered. Focused. Ready.**

Digital Transformation should be seamless, solutions driven and future-enabled. We ensure that each step of the business cycle flows seamlessly and automatically into the next. Our aim is to improve your business from the inside out, with no problem too big and no solution undiscovered.

With the latest technologies and specialists in customising, integrating and implementing these technologies, WebDevX propels your business towards productivity, efficiency, and ultimate success.

Our promise is an easy-to-use and integrated system. Simply put, we develop, implement and manage plans for improvement and growth.



## Business Analysis

### **Solutions. Success. ROI.**

We conduct in-depth analyses of organisational processes and systems, and match those against business needs and objectives. Through identifying where processes and systems hinder business needs, objectives and growth, we develop innovative solutions complemented by cutting-edge technology.

Our solutions ensure improved productivity and efficiency, clear savings and customer satisfaction.

There are no problems. Only puzzles. And, we love puzzles.

## Solutions Architecture

Creating and Deploying your Solutions  
With your business solutions in sight and within grasp, we use our understanding of your organisation's structure and processes to implement a customised solution that enhances every aspect of your business. The result is:

- Improved Performance, Productivity and Efficiency
- Automated Processes and Communication
- Intelligent Data Storing, Sorting, Management and Analysis
- Optimized Lead Generation and Management
- Improved Customer Relationship Management
- A Customer-Centric Online Presence

# Change Management

## **Educate. Guide. Manage.**

However necessary or beneficial, change can be daunting. WebDevX makes the process of change as seamless as possible, by ensuring that there is familiarity and flow in each implemented system.

We undergo extensive user testing to ensure that users are prepared and educated for change. Here, we work with the users to make sure that system functionality is met with a seamless and pleasant user experience.

# DEVELOPMENT SERVICES

## **Professional Services Automation**

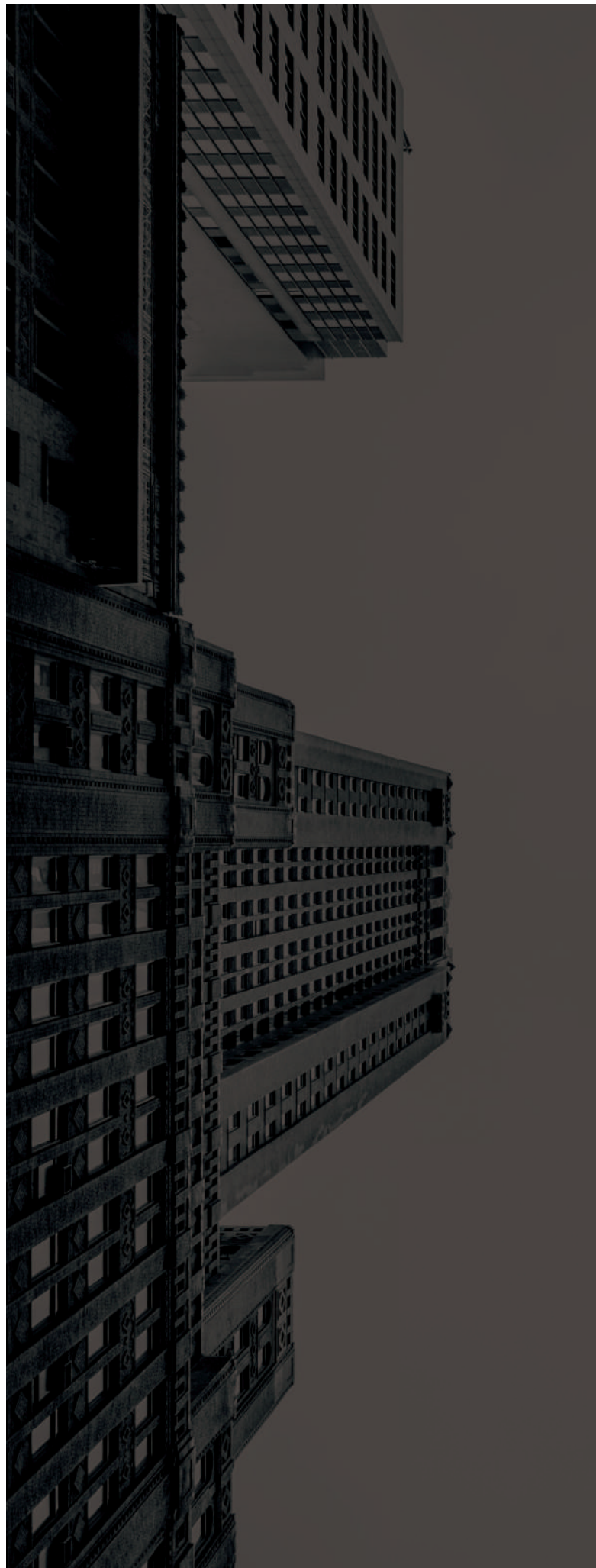
### **Plan. Allocate. Track. Report.**

Productivity, efficiency, output and customer satisfaction suffer without clear communication, planning and tracking. A clear strategy for automating services streamlines the work process from lead to work completion. Our solutions use a customisable analytics function to allocate work to the right person, track work, resources and time, and manage expenses, billing etc.

## **Business Process Management**

### **Efficient. Effective. Capable.**

BPM solutions improve corporate performance, ROI and subsequently customer retention. Through optimising our customers' business processes, we enable them to be more efficient, more productive, more effective and fully equipped for growth.





## Website Design and Development

### **First Impressions Last**

Your website is the window into your business, and often, your customers' first impression. Our team of Designers, User Experience (UX) experts, front and back-end Developers, and mobile responsiveness gurus make not only the first impression, but the entire user journey, one that keeps people coming back for more.

What's more is that, the more complicated the functions, the more excited we get.

## Application Development

### **Integration. Communication. Innovation.**

WebDevX's Applications development includes, but isn't limited to, web booking, rental, eCommerce, payment, sign-in, and reservation functions that link to internal systems, and automate often tedious processes. What we do makes it not only easier for customers to enjoy your services, but easier for you to track, store and, of course, sell.

## Enterprise Content Management

### **Communication. Collaboration. ROI**

Transform your business with an intelligent Intranet that digitises your project management, employee engagement, data management and internal communication. Our ECM strategies integrate Microsoft's SharePoint to your exact requirements and existing processes. We have the unique understanding of the SharePoint journey through which organisations can unlock immense return on investment.

We also provide services for Office 365 collaboration, SharePoint Online, Yammer, Delve, OneDrive and Teams.

## Cloud Services

### **Improve. Secure. Control.**

Say goodbye to paper, bulky machines, server rooms and external drives and back-ups, without giving up your security or time. In fact, moving your business into a Cloud is more secure, saves you time and reduces downtime. Not only that, but you will be able to easily access your data from wherever you are in the world and build intelligent solutions and websites that integrate with software, data and systems.

- It issues a set of recommended mitigations for each assessment
- It exports results to PDF for storing or sharing
- Your rating can be revised as you progress

## Application Life-cycle Management

### **Define. Implement. Deploy.**

Application Lifecycle Management (ALM) is the product lifecycle management (governance, development, and maintenance) of application software. It means that not only do we develop initial software, but constantly ensure that applications run optimally, adapt to technological changes, are maintained and improved.

# TECHNICAL SKILLS



# PROJECT EXPERIENCE

Our Project Experience includes, but is not limited to:

- Support and development for an online Ecommerce Websites
- Business Process Management and Workflow Implementations using K2, SharePoint, InfoPath, ASP.Net and Web Services
- Business Intelligence development
- SharePoint Migrations, Upgrades and Configurations for various companies
- Custom Application, Services and Web Services for various companies.
- Configuration and setup of new Web Server, Service Machine and Database server
- Support and new development on a Membership Management System
- Business Intelligence development using Performance Point and SQL Analysis services
- Full SharePoint and Workflow Implementation
- SharePoint, K2 and custom development
- Business Process Management, EDI Development
- System Development & SharePoint Implementations

# CLIENT PROFILE



Financial  
Intelligence Centre



telecommunications  
& postal services

Department:  
Telecommunications and Postal Services  
REPUBLIC OF SOUTH AFRICA



Tel: (+27) 0614023787 Email: [andrew@webdevx.co.za](mailto:andrew@webdevx.co.za) Web: [www.webdevx.co.za](http://www.webdevx.co.za)  
22 on Sloane, 22 Sloane Street, Bryanston  
Sandton, 2191, South Africa